

Protectli Firewall Appliances

Revised 04/22/2021

Protectli is the preferred source for firewalls in the United States, distributing worldwide. Protectli uniquely provides a trusted hardware platform with advanced firmware protection.

Protectli Vault

Open Source Ready



All Vaults are OS agnostic and support the popular open source firewall distros like pfSense, OPNsense, Untangle etc.

Advanced Firmware



The Vault can be configured with coreboot, the open source BIOS for maximum security, transparency, and audit-ability.

Trusted Hardware



Compact, 100% silent and backed by our US-based support team: The Vault features Intel CPUs, SSDs throughout, and comes with up to 6 Ports.

4G LTE Failover

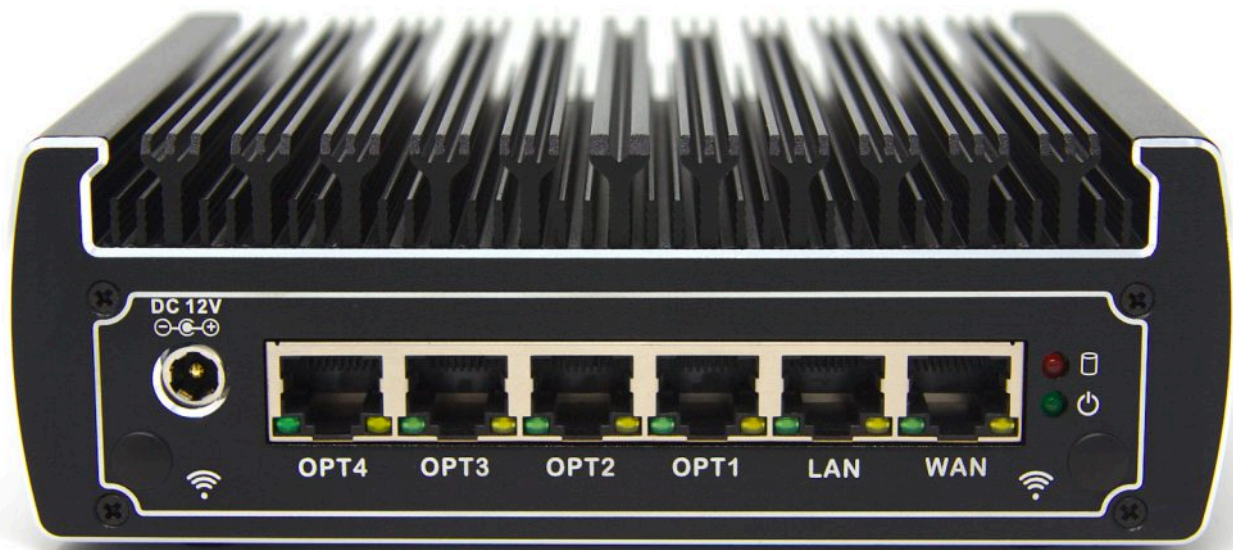


Never lose internet connectivity if you add the Protectli 4G LTE Modem for failover. Verizon and AT&T plans are available, or provide your own SIM.

FW6B-Series Data Sheet

| | |
|--------------------------|---------------------------------------------------------------------------------------------------------------------------|
| Model | FW6B |
| Description | 6 Network Port Fanless Appliance |
| Processor | Intel Kaby Lake i3-7100U (64 Bit, 2.4 GHz, 3MB Smart Cache) |
| Processor Cores | 2 |
| Processor Threads | 4 |
| Intel AES-NI | Supported |
| Network | 6x Intel Gigabit Ethernet |
| Graphics | Intel Integrated HD Graphics 620 |
| Video | 1x HDMI |
| Memory | 2x SO-DIMM Dual Channel DDR4-2133/2400 1.2v, Max 2133 MT/s, Max 64GB |
| Storage | 1x Mini SATA |
| Optional Storage | 1x Internal 2.5" SATA 3.0 |
| External I/O | 6x RJ-45 Ethernet 4x 3.0 USB 1x HDMI 1x RJ-45 COM 1x 12V DC Power Jack 2x WiFi Antenna Mounting Holes |
| Internal I/O | 2x SO-DIMM 1x MINI PCIe for mSATA 1x SATA 1x MINI PCIe only for optional Protectli WiFi Kit 1x CPU Fan Header |
| Wireless | Optional 802.11b/g/n WiFi Kit (Protectli P/N: WAP01K) |
| Indicators | 1x LED Power Button (Blue) 1x LED Power Indicator (Green) 1x LED Disk Activity Indicator (Red) |

| | |
|------------------------------|-------------------------------------------|
| | |
| Power | Input 12V DC |
| Power Usage | Max 30W |
| Chassis | Fanless, Aluminum, Black |
| Chassis Dimensions | 155 x 126.5 x 52.5 mm, 6.1 x 5 x 2 in |
| Mounting Options | Desktop, VESA Bracket |
| Weight | 2.25 lbs, 1.0 Kg |
| Shipping Weight | 3.75 lbs, 1.7 Kg |
| Operating Temperature | -10° - +50° C, +14° - +122° F |
| Operating Humidity | 0 – 95% relative humidity, non-condensing |
| Approvals | FCC Part 15 |
| Country of Origin | Made in China. Assembled in USA. |



Rear View

