

Protectli Appliance

Protectli Vault 4 Port - Intel® J3160 (FW4B)

January 3, 2023

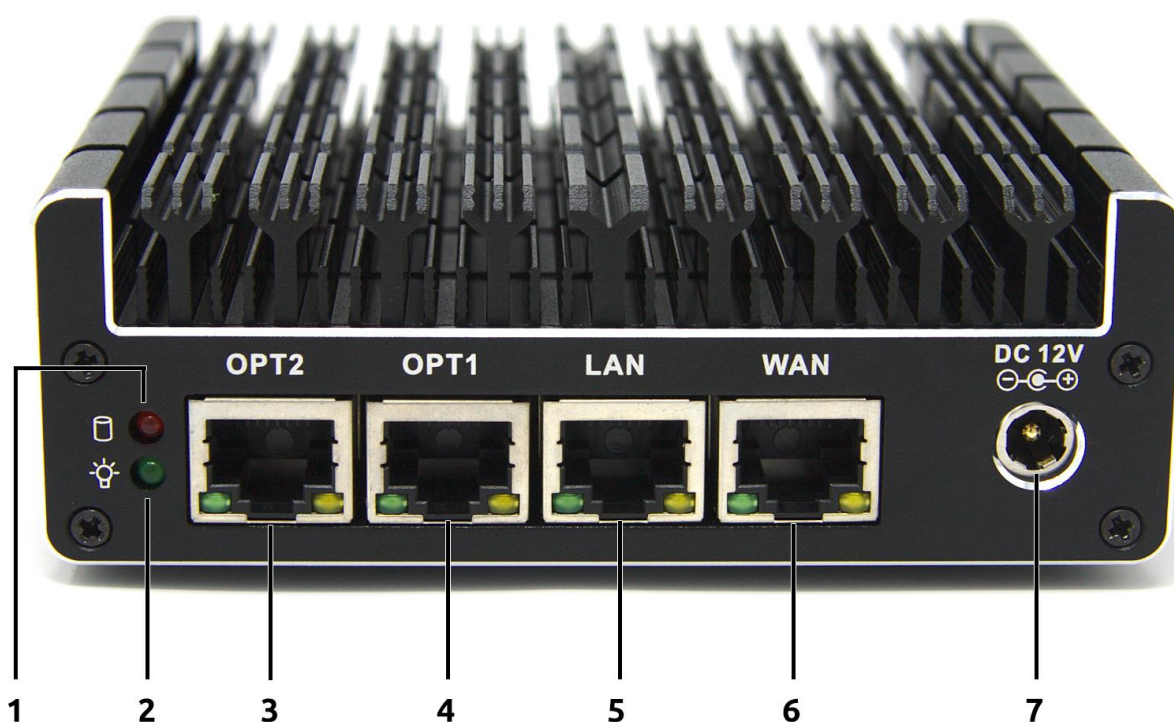
Specifications

Model	FW4B
Description	4X 1G Network Port Fanless Appliance
Processor	Intel J3160 (64 Bit, 1.6 GHz, Turbo 2.24 GHz, 2MB L2 Cache)
Processor Cores	4
Processor Threads	4
Intel AES-NI	Supported
Virtualization	Intel Vt-x
Network	4x Intel 1G Ethernet, RJ-45
Video / Graphics	Intel Clear Video HD, 2x HDMI 1.4
Audio	Audio over HDMI, 1x 3.5mm Audio Jack
Memory	1x SO-DIMM DDR3L-1600, 1.35v, Max 8GB
Storage	1x mSATA
Optional Storage	1x Internal 2.5" SATA 3.0 SSD
External I/O	4x RJ-45 Ethernet 2x USB 3.0 Type A, 2x USB 2.0 Type A 2x HDMI 1x 3.5mm Audio Jack 1x RJ-45 COM 2x WiFi/LTE Antenna Mounting Holes 1x 12V DC Power Jack
Internal I/O	1x Mini PCIe for mSATA 1x SATA, 1x SATA Power 1x Full Height mPCIe (USB) for WiFi or LTE 1x USB 2.0 Header 1x CMOS Reset (2 pin) 1x CPU Fan Header (4 pin) 1x Front Panel Header (9 pin)
BIOS	AMI or coreboot
Indicators	1x LED Power Button (Blue), 1x LED Power Indicator (Green), 1x LED Disk Activity Indicator (Red), 1x LED Disk Activity Indicator (Yellow)
Power	Input 12V DC, 1x DC Power Jack

Power Usage	Max 20W
Chassis	Fanless, Aluminum, Black
Chassis Dimensions	4.5 x 4.3 x 1.5 in, 115 x 107.5 x 39 mm
Mounting Options	Desktop, VESA Bracket, Optional 1RU Rack Mount
Weight	1.1 lbs, .50 Kg
Shipping Weight	2.8 lbs, 1.2 Kg
Operating Temperature	+14° - +122° F, -10° - +50° C
Operating Humidity	0 – 95% relative humidity, non-condensing
Approvals	UL (Power Supply), FCC Part 15 Class B, CE, RCM, RoHS
Country of Origin	Made in China, Assembled in USA
Optional WiFi	1x mPCIe 802.11b/g/n (USB)
Optional LTE Cellular	1x mPCIe 4G LTE (USB)

System Features

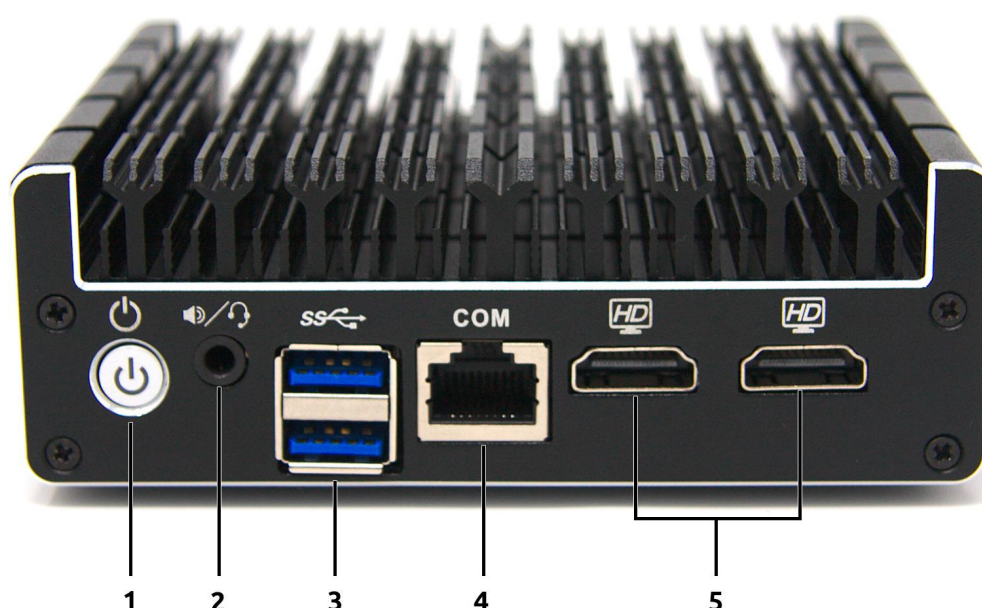
Front Features



Item #	Object	Description
1	HDD Activity LED	This red LED will light up when data activity is detected on either the mSATA or SATA interfaces.
2	Power Indicator LED	This LED will stay solid green when the device is powered on.
3	Ethernet Port 4	The fourth 10/100/1000 Mbps Intel® i211 ethernet port.
4	Ethernet Port 3	The third 10/100/1000 Mbps Intel® i211 ethernet port.
5	Ethernet Port 2	The second 10/100/1000 Mbps Intel® i211 ethernet port. This port is labeled “LAN” for convenience, but is not limited in its capacity.

6	Ethernet Port 1	The first 10/100/1000 Mbps Intel® i211 ethernet port. This port is labeled “WAN” for convenience, but is not limited in its capacity.
7	Power Supply Connector	12V DC barrel connector for the 40W external power supply. Positive rail is the tip, negative is sleeve.

Rear Features



Item #	Object	Description
1	Power Button	Pressing the Power Button will power the unit on and illuminate with a blue LED. <i>In OSes configured to handle ACPI signals, pressing the power button initiates a shutdown.</i> <i>Pressing and holding the Power Button for 5 seconds will force the unit to power off.</i>
2	Speaker and Microphone Port	A 3.5mm TRRS plug can be used to output stereo sound and input mono microphone.
3	Two USB3 Connectors	USB 3.0 Type-A connectors.

4	Serial Console Port	RS232 serial communications via RJ-45. Default port settings: <ul style="list-style-type: none">• 115200 baud• No parity• 8 databits• 1 stopbit
5	Two HDMI Connectors	Dual video and audio output via HDMI.

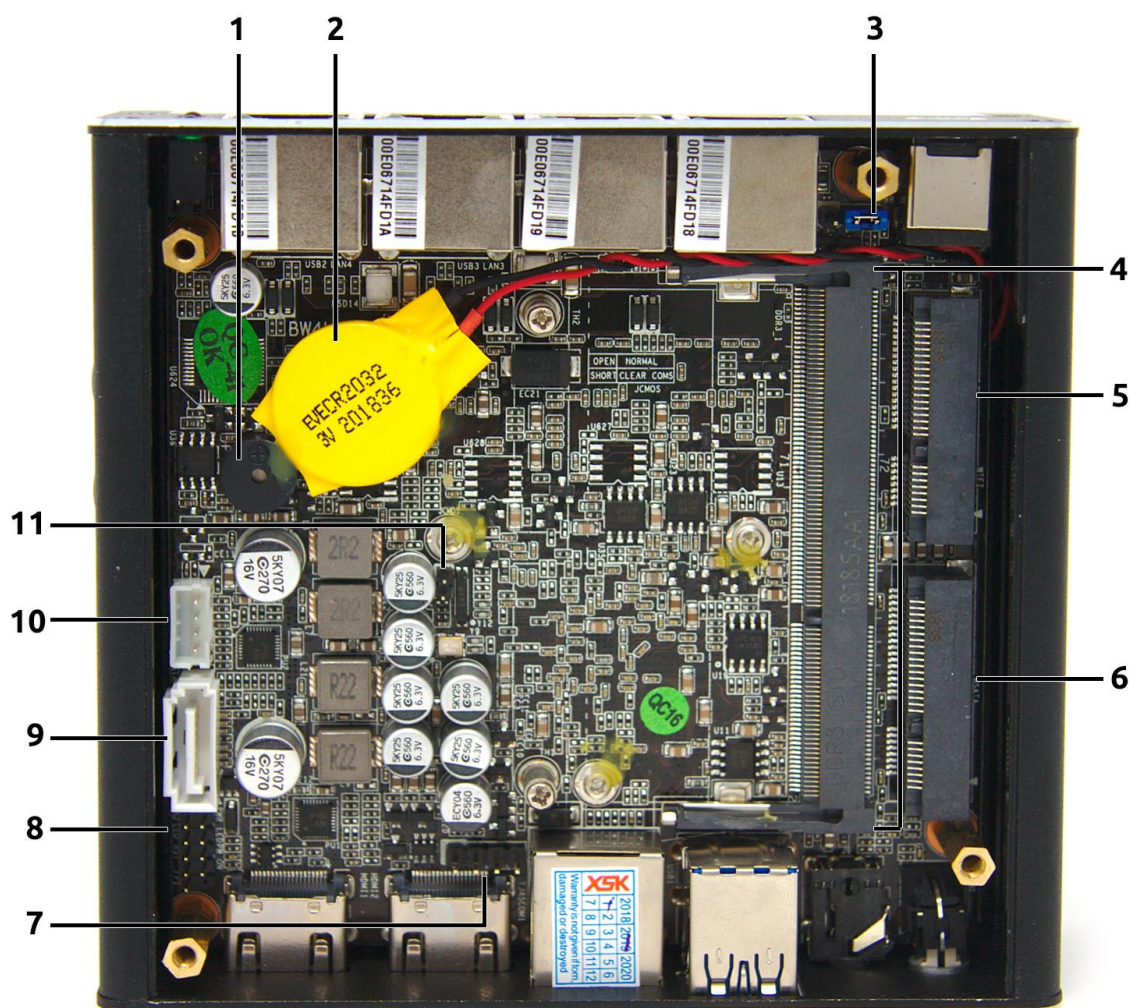
Left Features

Item #	Object	Description
1	Antenna Ports	Two antenna ports for adding radio antennas (WiFi, LTE, etc.). The ports are covered by plugs while not in use.

Right Features

Item #	Object	Description
1	Security Slot	A security slot allows for a physical security cable lock or similar devices.

Motherboard Top View



Item #	Object	Label	Description
1	Buzzer		PC Speaker.
2	CMOS Battery		3V CR2032 connected via 2-pin connector on the opposite side of the motherboard.
3	Power Restore Jumper	JPWR	Jumper setting determines system state after power loss. Closing the jumper will cause the unit to automatically power on when power is restored after an outage.
4	Memory Slot	DDR3_1	DDR3 SODIMM.

5	Wireless Expansion Slot	WIFI	Connector uses USB protocol over an mPCI connector. Designed for Protectli WiFi and LTE modems, but is not limited in its capabilities.
6	mSATA Connector	MSATA	Connector for an mSATA storage device, such as an SSD.
7	USB 2.0 Header	FUSB2	Internal header for additional USB 2.0 connections.
8	Front Panel Header		Internal header for adding external device controls and indicators featured through the front panel, such as power button, reset button, activity LEDs, etc.
9	SATA Data Connector	SATADATA	SATA III data connector. Recommended for additional storage, such as a 2.5" SATA SSD.
10	SATA Power Connector	SATAPWR	SATA power connector for additional storage.
11	NVRAM Reset Jumper	JCMOS	Shorting this jumper while the CMOS battery is connected will reset the BIOS NVRAM.

Isometric View

